

Best-in-Class Optical Clarity

TrueSight II Digital Variable ADF Welding Helmet

The better you can view your job, the better you can do your job. That's why highly skilled professional welders choose the Jackson Safety TrueSight II Welding Helmet with Balder Technology – featuring best-in-class optical clarity to help you weld longer with less eye fatigue and more productivity.

- Best-in-Class optical clarity with true 1/1/1/1 rating
- Our largest viewing area of 4.00" x 3.25"
- Easy to use digital keypad
- Lightweight
- 5-Year warranty on ADF
- Separate buttons for Weld, Torch and Grind modes

BALDER*
TECHNOLOGY



JACKSON[®]
SAFETY Brand

TrueSight II Digital Variable Auto-Darkening Filter Welding Helmet with Balder Technology



Features:

- Variable Auto-Darkening Filter (ADF) with Balder Technology delivers true 1/1/1/1 optical rating
- Superior angle of view helps reduce eye fatigue and the need to move head, adjust and refocus
- Band pass with true color recognition for enhanced clarity of weld puddle
- Four independent sensors positioned to reduce possibility of blockage during weld
- Variable shade from 5-8 and 9-13
- No retainer for easy helmet installation and removal
- Meets ANSI Z87.1 2010 standards and is CSA Z94.3 compliant
- DIN Plus Certified

TrueSight* II Digital Variable ADF Welding Helmet with Balder* Technology

Code	Description	Units/Case
46159	HLX Welding Helmet with TrueSight II Digital ADF – Black	1
46160	HLX Welding Helmet with TrueSight II Digital ADF – Tattoo	1
46162	HLX Welding Helmet with TrueSight II Digital ADF – Serpent	1
46163	HLX Welding Helmet with TrueSight II Digital ADF – Arc Angel	1
46164	HLX Welding Helmet with TrueSight II Digital ADF – Ace of Spades	1
46111	HLX Welding Helmet with TrueSight II Digital ADF – Gold Wings	1
46118	HLX Welding Helmet with TrueSight II Digital ADF – Stars & Scars	1
46119	HLX Welding Helmet with TrueSight II Digital ADF – Flaming Butterfly	1
46120	HLX Welding Helmet with TrueSight II Digital ADF – Metal	1
46158	TrueSight II ADF Cartridge, 4.5 x 5.25	1
30320	TrueSight II External Safety Lens	10
30321	TrueSight II Internal Safety Lens	10
20696	370 Replacement Headgear	6

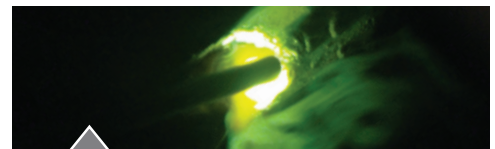


Hard Hat Interchange System
Let's you easily, remove or switch between welding helmet or face shield without removing your hard hat

See the difference with Balder* Technology:



View with Jackson Safety* ADF Helmet with Balder* Technology



View with competitive ADF

To learn more, please contact your SureWerx Sales representative or visit www.Surewerx.com

Contact customer service:
1-800-323-7402



Jackson Safety Auto-Darkening Filter (ADF) Warning

- Provides limited eye protection. Additional protective devices are required for full eye coverage and protection.
- Should not be worn to protect from other hazards including, but not limited to, airborne dusts or mists, liquid splashes, impact hazards and sports activities.

The selection and use of welding personal protective equipment must be based on a hazard assessment of the wearer's work environment conducted by the wearer, or for an industrial environment, an appropriately trained individual for your employer or organization in accordance with OSHA regulations 29 CFR 1910.133 and ANSI Standard No. Z87.1. Make sure the ADF is installed properly into the helmet shell and is clean. If the ADF is scratched or damaged, do not use it and replace it with a new one. Do not use the ADF without the Jackson Safety brand internal and external safety plates. To clean, wipe only with a soft cloth. Do not immerse ADF in liquids.