



WELDING JACKETS

HIGH QUALITY PROTECTION FOR VARIOUS APPLICATIONS
AND ENVIRONMENTS.

LINCOLN[®]
ELECTRIC

WELDING JACKETS

Designed by The Welding Experts™

FR Jackets & Shirts



Traditional FR Cloth
Welding Jacket

K2985-M,-L,-XL,-2XL,-3XL

Traditional Khaki FR Cloth
Welding Jacket

K3317-M,-L,-XL,-2XL,-3XL



Black FR Cloth
Welding Shirt

K3113-M,-L,-XL,-2XL,-3XL

Khaki FR Cloth
Welding Shirt

K3382-M,-L,-XL,-2XL,-3XL



FR Cloth Welding Lab Coat
K3112-M,-L,-XL



XVI Industrial FR
Welding Jacket
K4931-M,-L,-XL,-2XL,-3XL,-
-4XL,-5XL

FR & Leather Hybrid



Traditional Split
Leather
Sleeved FR
Welding Jacket
K3106-M,-L,-XL,-
-2XL,-3XL



XVI Series Split Leather
FR Welding Jacket
K4933-M,-L,-XL,-2XL,-
-3XL,-4XL,-5XL



Shadow Split Leather
Sleeved FR Welding
Jacket
K2986-M,-L,-XL,-
-2XL,-3XL,-5XL



Shadow Grain Leather
Sleeved FR Welding
Jacket
K2987-M,-L,-XL,-
-2XL,-3XL



Women's Shadow FR
Welding Jacket
K3114-XS,-S,-M,-L,-XL

Heavy Duty



XVI Series Grain Leather
FR Welding Jacket
K4932-M,-L,-XL,-2XL,-
-3XL,-4XL,-5XL



Heavy Duty Leather
Welding Jacket
K2989-M,-L,-XL,-
-2XL,-3XL



Split Leather
Welding Apron
K3110-ALL

High Visibility



Bright FR Cloth Welding
Jacket - Safety Orange
K4688-M,-L,-XL,-
-2XL,-3XL



Bright FR Cloth Welding
Jacket - Safety Lime
K4689-M,-L,-XL,-
-2XL,-3XL



High Visibility FR Orange
Welding Jacket w/
Reflective Stripes
K4692-M,-L,-XL,-
-2XL,-3XL



Bright FR Orange Welding
Jacket w/ Leather Sleeves
K4690-M,-L,-XL,-
-2XL,-3XL

Selecting Welding Jackets

It's as easy as . . .

1 Primary Welding Process(es)



STICK



MIG



FLUX-CORED



TIG



GENERAL
PURPOSE

2 Amperage Range



3 Rank Your Benefits



Heat
Resistance



Durability



Comfort



Versatility



Price



WELDING JACKET SELECTION EXAMPLES

Donald, a welder from Ohio, primarily TIG welds at 200 amps and values comfort and price.

Product Recommendation:
Traditional FR Welding Jacket [K2985-Size]

Todd, a welder from Kansas, welds multiple processes, wide amperage ranges and values durability, heat resistance and versatility.

Product Recommendation:
XVI Split Leather Welding Jacket [K4933-Size]

Usage
Recommendations:

Primary Welding Processes:
TIG, MIG

Secondary Welding Processes:
Stick

**Recommended
Amperage Range:**
25A - 300A

K3317-M,-L,-XL,-2XL,-3XL

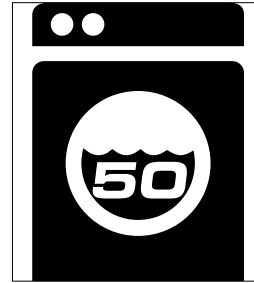
TOP FEATURES



The premium 9oz. Flame retardant jacket (FR) cotton fabric prevents and extinguishes fire while allowing airflow for superior comfort.



The seams of the jacket are sewn with multi-layer patterns to prevent rips and tears therefore increasing durability.



This jacket can be washed up to 50 times and still maintains its flame retardant properties allowing for a longer service life than lower quality jackets.

Traditional Khaki FR Cloth Welding Jacket



Usage
Recommendations:

Primary Welding Processes:
TIG, MIG

Secondary Welding Processes:
Stick

**Recommended
Amperage Range:**
25A - 300A

K2985-M,-L,-XL,-2XL,-3XL

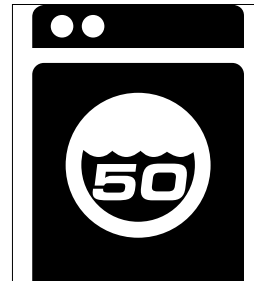
TOP FEATURES



The premium 9oz. Flame retardant jacket (FR) cotton fabric prevents and extinguishes fire while allowing airflow for superior comfort.



The seams of the jacket are sewn with multi-layer patterns to prevent rips and tears therefore increasing durability.



This jacket can be washed up to 50 times and still maintains its flame retardant properties allowing for a longer service life than lower quality jackets.

Traditional FR Cloth Welding Jacket



Khaki FR Cloth Welding Shirt



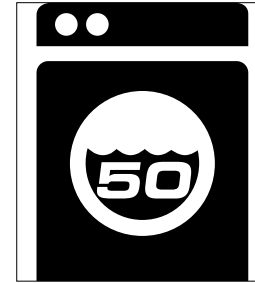
TOP FEATURES



The premium 9oz. Flame retardant jacket (FR) cotton fabric prevents and extinguishes fire while allowing airflow for superior comfort.



Strategically located FR reinforcements improves protection and can extend the usable life of the shirt.



This jacket can be washed up to 50 times and still maintains its flame retardant properties allowing for a longer service life than lower quality jackets.



Usage Recommendations:

Primary Welding Processes:
MIG, TIG

Secondary Welding Processes:
Stick

Recommended Amperage Range:
25A - 325A

K3382-M,-L,-XL,-2XL

Black FR Cloth Welding Shirt



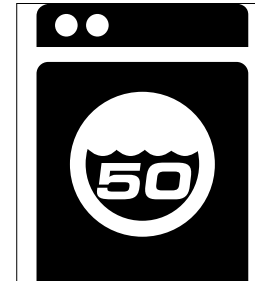
TOP FEATURES



The premium 9oz. Flame retardant jacket (FR) cotton fabric prevents and extinguishes fire while allowing airflow for superior comfort.



Strategically located FR reinforcements improves protection and can extend the usable life of the shirt.



This jacket can be washed up to 50 times and still maintains its flame retardant properties allowing for a longer service life than lower quality jackets.



Usage Recommendations:

Primary Welding Processes:
MIG, TIG

Secondary Welding Processes:
Stick

Recommended Amperage Range:
25A - 325A

K3113-M,-L,-XL,-2XL,-3XL

Usage
Recommendations:

Primary Welding Processes:
Stick, Flux-Core

Secondary Welding Processes:
MIG, Pulsed MIG

**Recommended
Amperage Range:**
50A - 300A

K4688-M,-L,-XL,-2XL,-3XL

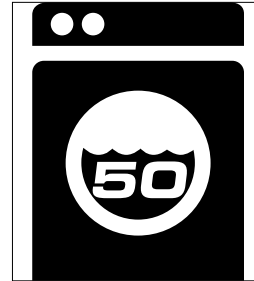
TOP FEATURES



The premium 9 oz. flame retardant jacket's vibrant color cotton fabric allows airflow for superior comfort and improves safety and visibility.



The seams of the jacket are sewn with multi-layer patterns to prevent rips and tears therefore increasing durability.



This jacket can be washed up to 50 times and still maintains its flame retardant properties allowing for a longer service life than lower quality jackets.

Bright FR Cloth Welding Jacket - Safety Orange



Usage
Recommendations:

Primary Welding Processes:
Stick, Flux-Core

Secondary Welding Processes:
MIG, Pulsed MIG

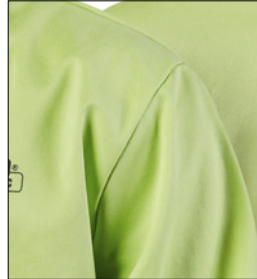
**Recommended
Amperage Range:**
50A - 300A

K4689-M,-L,-XL,-2XL,-3XL

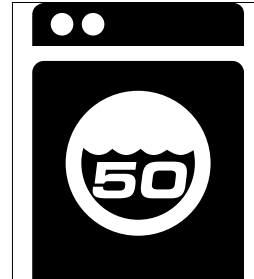
TOP FEATURES



The premium 9 oz. flame retardant jacket's vibrant color cotton fabric allows airflow for superior comfort and improves safety and visibility.



The seams of the jacket are sewn with multi-layer patterns to prevent rips and tears therefore increasing durability.



This jacket can be washed up to 50 times and still maintains its flame retardant properties allowing for a longer service life than lower quality jackets.

Bright FR Cloth Welding Jacket - Safety Lime



Usage
Recommendations:

Primary Welding Processes:
MIG, Stick

Secondary Welding Processes:
Flux-Core, TIG

Amperage Range:
50A - 350A

K4692-M,-L,-XL,-2XL,-3XL

TOP FEATURES



The premium 9 oz. flame retardant jacket's vibrant color cotton fabric allows airflow for superior comfort and improves safety and visibility.



Kevlar sewn silver reflective tape provides added visibility, prevents rips and increases durability. Ideal for operators near moving vehicles.



Features back slot allowing jacket to be worn in conjunction with fall protection harness.

High Visibility FR Orange Welding Jacket w/ Reflective Stripes



Traditional Split Leather Sleeved FR Welding Jacket



TOP FEATURES



Constructed of heavy weight black split leather for great protection with a two piece inner bicep to improve arm mobility



Premium Flame Retardant body you can trust it to prevent and extinguish fire while allowing free flowing movement



The seams of the jacket are sewn with multi-layer patterns to prevent rips and tears therefore increasing durability.



Usage Recommendations:

Primary Welding Processes:
MIG, Stick

Secondary Welding Processes:
Flux-Core, TIG

Recommended Amperage Range:
50A - 375 A

K3106-M,-L,-XL,-2XL,-3XL

Bright FR Orange Welding Jacket w/ Leather Sleeves



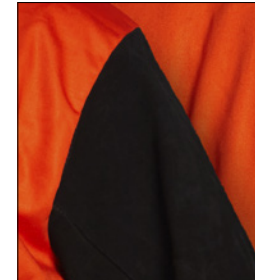
TOP FEATURES



Constructed of heavy weight black split leather for great protection with a two piece inner bicep to improve arm mobility.



Premium Flame Retardant body you can trust it to prevent and extinguish fire while allowing free flowing movement.



The seams of the jacket are sewn with multi-layer patterns to prevent rips and tears therefore increasing durability.



Usage Recommendations:

Primary Welding Processes:
MIG, Stick

Secondary Welding Processes:
Flux-Core, TIG

Recommended Amperage Range:
50A - 375 A

K4690-M,-L,-XL,-2XL,-3XL

Usage
Recommendations:

Primary Welding Processes:
MIG, Stick

Secondary Welding Processes:
Flux Core, TIG

Amperage Range:
50A - 400A

K2986-M,-L,-XL,-2XL,-3XL,-5XL

TOP FEATURES



Constructed of heavy weight black split leather for great protection with a two piece inner bicep to improve arm mobility.



Premium Flame Retardant body you can trust it to prevent and extinguish fire while allowing free flowing movement.



To eliminate sparks and spatter from entering the jacket, the front button column has three layers of fabric and velcro to improve protection and fit.

Shadow Split Leather Sleeved FR Welding Jacket



Usage
Recommendations:

Primary Welding Processes:
MIG, TIG

Secondary Welding Processes:
Stick, Flux Core

Amperage Range:
50A - 400A

K2987-M,-L,-XL,-2XL,-3XL

TOP FEATURES



Constructed of heavy weight black grain leather for great protection with a two piece inner bicep to improve arm mobility.



Premium Flame Retardant body you can trust it to prevent and extinguish fire while allowing free flowing movement.



To eliminate sparks and spatter from entering the jacket, the front button column has three layers of fabric and velcro to improve protection and fit.

Shadow Grain Leather Sleeved FR Welding Jacket



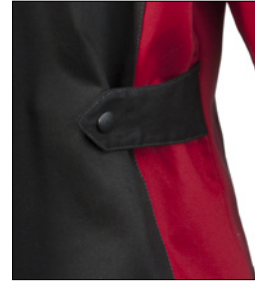
Womans Shadow FR Welding Jacket



TOP FEATURES



The jacket torso is designed to fit female body types to improve comfort and protection versus standard welding jackets.



To improve jacket fit, each side has an adjustable side straps to offer a comfortable fit for various body sizes.



Constructed of heavy weight black split leather for great protection with a two piece inner bicep to improve arm mobility.



Usage Recommendations:

Primary Welding Processes:
MIG, Stick

Secondary Welding Processes:
TIG, Flux-Core

Recommended Amperage Range:
50A - 400A

K3114-XS,-S,-M,-L,-XL

XVI Series Split Leather FR Welding Jacket



TOP FEATURES



Constructed with black split leather at highest wear points, grey 16 oz. FR fabric at medium wear points and 9 oz. black FR cotton at lower wear points to maximize longevity, protection and ergonomics.



Innovative cushioned neck helps alleviate common pressure points & absorbs moisture while split leather silk lined sleeves improve cooling and are hypoallergenic.



To eliminate sparks and spatter from entering the jacket, the front button column has three layers of fabric and velcro to improve protection and fit.



Usage Recommendations:

Primary Welding Processes:
MIG, Stick, Flux-Core

Secondary Welding Processes:
TIG

Amperage Range:
75A- 500A

K4933-M,-L,-XL,-2XL,-3XL,-4XL,-5XL

Usage
Recommendations:

Primary Welding Processes:
Stick, Flux-Core

Secondary Welding Processes:
MIG

Amperage Range:
100A - 500A

K2989-M,-L,-XL,-2XL,-3XL

TOP FEATURES



Heavy duty split cow-hide leather gives the welder the ultimate protection for stick welding.



9 oz. Flame Retardant Cotton back keeps you cooler than full leather back.



The full leather design can withstand heavy exposure to spatter, sparks or heat. Additionally, leather thickness and reinforced seams increase the service life of the jacket.

Heavy Duty Leather Welding Jacket



Usage
Recommendations:

Primary Welding Processes:
MIG, Stick, Flux-Core

Secondary Welding Processes:
TIG

Amperage Range:
75A- 500A

**K4932-M,-L,-XL,-2XL,-3XL,
-4XL, -5XL**

TOP FEATURES



Constructed with black grain leather at highest wear points, grey 16 oz. FR fabric at medium wear points and 9 oz. black FR cotton at lower wear points to maximize ergonomics, comfort, longevity and protection.



Innovative cushioned neck helps alleviate common pressure points & absorbs moisture while grain leather sleeves maximize flexibility, improve cooling and are hypoallergenic.



To eliminate sparks and spatter from entering the jacket, the front button column has three layers of fabric and velcro to improve protection and fit.

XVI Series Grain Leather FR Welding Jacket



Split Leather Welding Apron



TOP FEATURES



Constructed of heavy weight black split leather to protect from long term exposure exposure to high heat, spatter, sparks or other hazards.



The X Shaped Harness is designed to evenly distribute the aprons weight and can be adjusted to ensure a snug, secure fit.



The apron is sewn with high strength kevlar throughout and also features integrated rivets to reinforce high stress points and increase the usage life of the apron.



Usage Recommendations:

Primary Welding Processes:
MIG, Stick, Subarc

Secondary Welding Processes:
Flux-Core

Amperage Range:
50A - 250A

K3110-ALL

Quick Order Guide

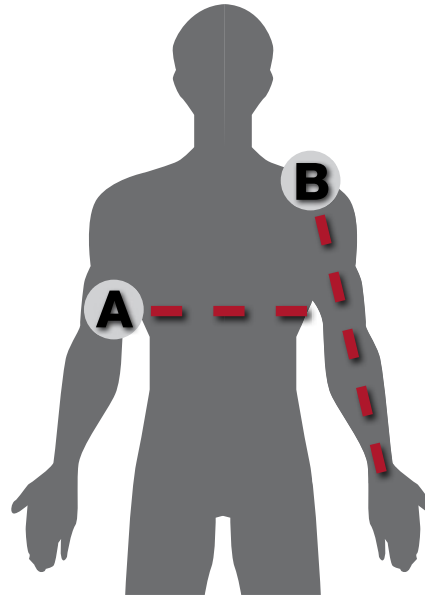
PART #	DESCRIPTION	X-SMALL	SMALL	MEDIUM	LARGE	X-LARGE	2XL	3XL	4XL	5XL
K2985	Traditional Black FR Cloth Welding Jacket			•	•	•	•	•		
K3317	Traditional Khaki FR Cloth Welding Jacket			•	•	•	•	•		
K3113	Black FR Welding Shirt			•	•	•	•	•		
K3382	Khaki FR Welding Shirt			•	•	•	•	•		
K3112	FR Welding Lab Coat			•	•	•				
K4931	XVI Industrial FR Welding Jacket			•	•	•	•	•	•	•
K3106	Traditional Split Leather-Sleeved Welding Jacket			•	•	•	•	•		
K4933	XVI Series Split Leather FR Welding Jacket			•	•	•	•	•	•	•
K2986	Shadow Split Leather Sleeved Welding Jacket			•	•	•	•	•	•	•
K2987	Shadow Grain Leather Sleeved Welding Jacket			•	•	•	•	•		
K3114	Women's Shadow FR Welding Jacket	•	•	•	•	•				
K4932	XVI Series Grain Leather FR Welding Jacket			•	•	•	•	•	•	•
K2989	Heavy Duty Leather Welding Jacket			•	•	•	•	•		
K4688	Bright FR Cloth Welding Jacket - Safety Orange			•	•	•	•	•		
K4689	Bright FR Cloth Welding Jacket - Safety Lime			•	•	•	•	•		
K4692	High Visibility FR Orange Welding Jacket w/ Reflective Stripes			•	•	•	•	•		
K4690	Bright FR Orange Welding Jacket w/ Leather Sleeves			•	•	•	•	•		

Welding Jackets & Shirts Size Chart

Instructions

- To determine chest size, measure the width of your torso at its broadest point.
- To determine sleeve size, extend your arm and measure from collar to wrist.

Refer to the table on the right to determine your size:



	Size	M	L	XL	2XL	3XL
A	Chest	38" - 42"	42" - 46"	46" - 50"	50" - 54"	54" - 58"
B	Sleeve	31"	32"	33"	34"	35"

CUSTOMER ASSISTANCE POLICY

The business of The Lincoln Electric Company® is manufacturing and selling high quality welding equipment, consumables, and cutting equipment. Our challenge is to meet the needs of our customers and to exceed their expectations. On occasion, purchasers may ask Lincoln Electric for information or advice about their use of our products. Our employees respond to inquiries to the best of their ability based on information provided to them by the customers and the knowledge they may have concerning the application. Our employees, however, are not in a position to verify the information provided or to evaluate the engineering requirements for the particular weldment. Accordingly, Lincoln Electric does not warrant or guarantee or assume any liability with respect to such information or advice. Moreover, the provision of such information or advice does not create, expand, or alter any warranty on our products. Any express or implied warranty that might arise from the information or advice, including any implied warranty of merchantability or any warranty of fitness for any customers' particular purpose is specifically disclaimed.

Lincoln Electric is a responsive manufacturer, but the selection and use of specific products sold by Lincoln Electric is solely within the control of, and remains the sole responsibility of the customer. Many variables beyond the control of Lincoln Electric affect the results obtained in applying these types of fabrication methods and service requirements.

Subject to Change – This information is accurate to the best of our knowledge at the time of printing. Please refer to www.lincolnelectric.com for any updated information.

*All trademarks and registered trademarks are the property of their respective owners.

Publication E14.748 | Issue Date 08/21
© Lincoln Global, Inc. All Rights Reserved.

The Lincoln Electric Company
22801 St. Clair Avenue • Cleveland, OH • 44117-1199 • U.S.A.
www.lincolnelectric.com