

# Deltaweld® 500/600 Systems

MIG Welding  
System



## QUICK SPECS

### Heavy Industrial Applications

General manufacturing  
General fabrication  
Structural steel fabrication  
Transportation  
Sheet metal fabrication  
Light-gauge tube and sheet

### Processes

MIG (GMAW)  
Flux-cored (FCAW)  
Accu-Pulse® (GMAW-P)\*  
Versa-Pulse™ (GMAW-P)\*\*  
High-deposition MIG (GMAW)\*\*  
RMD® (Regulated Metal Disposition)\*\*  
Air carbon arc (CAC-A) — Rated: 5/16-inch carbons

\*With Intellx™ Pro and Intellx™ Elite feeders.

\*\*With Intellx™ Elite feeders.

**Auxiliary Power** 115 V standard

### Input Power

208/230/460 V or 575 V, 3-phase, 60 Hz

### Rated Output

500: 500 A at 100% duty cycle

600: 600 A at 100% duty cycle

### Output Range

500: 30–650 A, 10–44 V

600: 30–750 A, 10–44 V

The standard in manufacturing for welders of all skill levels,  
with Intellx™ wire feeder options that deliver application-specific benefits.

### Dedicated wire feeder options

- Intellx Basic feeder with arc control means welders can produce better welds with minimal parameter adjustments.
- Intellx Pro feeder adds EZ-Set, Accu-Pulse, memory buttons and steel and stainless weld programs.
- Intellx Elite feeder adds additional weld programs, intuitive display with on-demand graphics and more control.

### Easy to use

EZ-Set simplifies parameter setup based on material thickness, removing complexity.



### Pulse capable

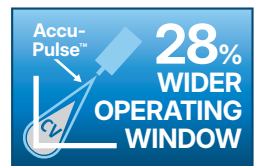
Accu-Pulse offers a more forgiving arc and compensates for variations in operator technique, providing a wider operating window.

### Ready to weld

Reduce the time and hassle of setting up welding systems. Make your move to a weld-ready Deltaweld MIGRunner™.

## Insight

Optional Welding Intelligence™ weld monitoring system. Get more done, produce higher-quality welds and control costs. See page 6 for more information.



Deltaweld 500 MIGRunner™ with single-wire Intellx™ Elite feeder shown with optional industrial water cooler (sold separately).



Power source is warranted for three years, parts and labor.  
Original main power rectifier parts are warranted for five years.  
Gun warranted for 90 days, parts and labor.



Miller Electric Mfg. LLC  
An ITW Welding Company  
1635 West Spencer Street  
P.O. Box 1079  
Appleton, WI 54912-1079 USA

Equipment Sales US and Canada  
Phone: 866-931-9730  
International Phone: 920-735-4554

MillerWelds.com



# Deltaweld® 500/600 Features

**Dedicated constant-current gouge mode**, rated for up to 3/8-inch carbons.

**Wind Tunnel Technology™.** Internal air flow that protects electrical components and PC boards from dirt, dust, debris—greatly improving reliability.

**Fan-On-Demand™** operates only when needed reducing noise, power consumption, and the amount of airborne contaminants pulled through the machine.



Deltaweld 500 with meters and Insight



**Standard 115-volt auxiliary power** provides 15 amps of circuit-breaker-protected power.



**ArcConnect™** is a next generation communication that utilizes high speed signals to improve weld performance and allow point-of-use controls to be located at the feeder.

**Backwards compatibility.** Models are available with both ArcConnect and the standard Miller® 14-pin for use with older Miller® wire feeders.



Deltaweld 500 with meters, 14-pin receptacle and Insight



**Industrial cart** is more robust with stowaway dual cylinder rack and lockable front casters with oversized rear wheels. Included in MIGRunner packages or sold separately.



**Optional industrial water cooler** plugs directly into the 115-volt receptacle on the back of the Deltaweld power source and slides into bottom of industrial cart. Has 2.5-gallon coolant capacity with easy front fill, external filter, and power and flow indicators.

# Intelx™ Feeders Features



**Balanced-pressure drive-roll design and tensioners** feed wire in its truest and straightest form for consistent feedability, resulting in better welding performance.

**Accu-Mate™ connection** aligns the gun perfectly in the drive-roll carrier — preventing the gun from being pulled loose and providing consistent wire feeding.

**Drive rolls and guides are common** with other Miller® industrial feeders (use existing, not new parts).

**Inlet guide and intermediate guide installation is toolless.**

**Rotatable drive assembly** allows operator to rotate the drive, eliminating severe bends in the wire feed path. This extends gun-liner life and aids in feeding difficult wires.



**Single-wire feeder swivel kit** for convenience and function, reducing wear on gun and liner assembly. It includes integrated handle, MIG gun and cable holders, and moves with the MIG gun, allowing operator to see the front of the feeder and which parameters are selected.



Intelx Pro single-wire feeder

- Memory buttons for quick program recall
- Display and controls for volts/arc length, wire feed speed, and EZ-Set (if selected)
- Arc control to fine tune the welding arc
- LCD setup screen for easy selection of welding processes
- Jog and purge button
- Trigger hold, trigger select, preflow and postflow buttons



Intelx Elite single-wire feeder

- Soft keys to easily navigate menus
- Full-color LCD screen to simplify the setup and operation of a fully featured feeder
- Arc control to fine tune welding arc
- Memory buttons for quick program recall
- Trigger connections for standard MIG gun and XR-Aluma-Pro™ Plus and XR™-Pistol Plus push-pull guns



**Dual-wire models** allow two different wire types to be available on one feeder, avoiding downtime from changing spools and drive rolls.

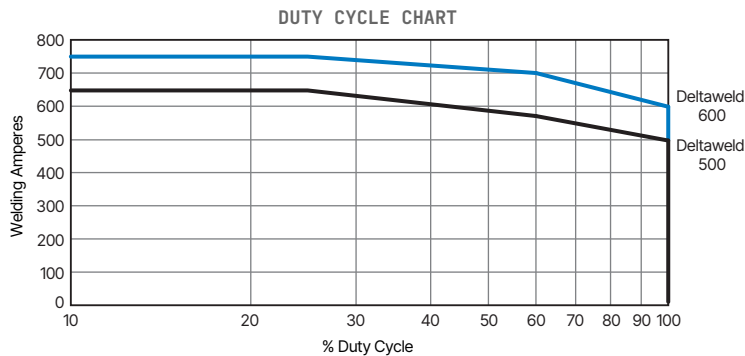
# Deltaweld® 500/600 Processes and Performance Data

BEST FOR	STANDARD SPRAY	HD MIG**	ACCU-PULSE*	VERSA-PULSE**	SHORT CIRCUIT	RMD**
Deposition	A	A	A	B	D	D
Gap filling	D	D	B	B	A	A
Low heat input	D	C	B	A	A	A
Out-of-position welds			A	B	B	B
Low spatter	A	A	A	B	C	B
Thick metals	A	A	A	C	D	D
Thin metals			B	A	A	A
Increased travel speed	A	A	A	A	B	C



Ratings A, B, C, and D are relative values. An "A" rating indicates a best fit between your performance needs and process. A "blank" rating indicates that the process is not recommended for that application.

\*With Intellix™ Pro and Intellix™ Elite feeders. \*\*With Intellix™ Elite feeders.



## MIG

- Lower spatter than traditional MIG welders
- Better arc performance with silicon bronze and coated materials

## Accu-Pulse®\*

- The most popular process for majority of industrial welding applications
- Most adaptive arc on 16 gauge (1.6 mm) and thicker
- Designed for all weld positions

## Versa-Pulse™ \*\*

- Fast, low-heat, low-spatter process — for materials 1/4 inch (6.35 mm) and thinner
- Great for gap filling
- Shortest arc length/lowest pulse voltage for lower heat and lower spatter at higher speeds

## High-deposition MIG (HD MIG)\*\*

- Higher deposition rates than standard spray transfer on thicker materials
- Designed for welding applications in which spray transfer is preferred

## RMD® \*\*

- Lowest heat process, best for gap handling
- Limited travel speed

## Deltaweld® 500/600 Specifications (Subject to change without notice.)



MODEL	MODE	AMP/VOLT RANGES	RATED OUTPUT	AMPS INPUT AT RATED LOAD OUTPUT, 60 HZ								DIMENSIONS	NET WEIGHT
				208 V*	230 V*	460 V	575 V	KVA	KW				
Deltaweld 500	MIG (GMAW)	10–44 V	500 A at 39 VDC, 100% duty cycle	64.2	58.1	30.4	24.8	24.2 (24.7**)	21.7 (21.7**)	H: 22.36 in. (568 mm) (includes lift eye) W: 15.35 in. (390 mm) D: 31.65 in. (804 mm)	145 lb. (65.8 kg)		
			575 A at 42.75 VDC, 60% duty cycle	80.2	73.5	38.0	30.4	30.3 (30.2**)	27.2 (27.2**)				
			650 A at 44 VDC, 25% duty cycle	94.2	84.9	43.9	34.9	35.0 (34.8**)	31.6 (31.7**)				
	Gouge (CAC-A)	30–650 A	500 A at 40 VDC, 100% duty cycle	65.4	59.6	31.1	25.3	24.8 (25.2**)	22.2 (22.3**)				
			575 A at 43 VDC, 60% duty cycle	81.0	73.5	38.0	30.3	30.2 (30.1**)	27.3 (27.4**)				
			650 A at 44 VDC, 25% duty cycle	94.2	84.9	43.9	34.9	35.0 (34.8**)	31.6 (31.7**)				
Deltaweld 600	MIG (GMAW)	10–44 V	600 A at 44 VDC, 100% duty cycle	64.2	58.1	40.6	32.3	29.1 (29.2**)	32.3 (32.2**)	H: 22.36 in. (568 mm) (includes lift eye) W: 15.35 in. (390 mm) D: 31.65 in. (804 mm)	145 lb. (65.8 kg)		
			700 A at 44 VDC, 60% duty cycle	80.2	73.5	47.7	37.6	34.2 (34.1**)	38.1 (37.4**)				
			750 A at 44 VDC, 40% duty cycle	94.2	84.9	51.1	40.5	36.7 (40.5**)	40.8 (40.4**)				
	Gouge (CAC-A)	30–750 A	600 A at 44 VDC, 100% duty cycle	65.4	59.6	40.9	32.2	29.2 (29.2**)	32.6 (32.1**)				
			700 A at 44 VDC, 60% duty cycle	81.0	73.5	47.3	37.8	34.2 (34.3**)	37.8 (37.7**)				
			750 A at 44 VDC, 40% duty cycle	94.2	84.9	51.1	40.5	36.7 (40.5**)	40.8 (40.4**)				

\*On 208 and 230 V input power, Deltaweld 600 operates at the same output ratings as Deltaweld 500. \*\*KVA and KW for 575-volt model.

Certified by Canadian Standards Association to both the Canadian and U.S. Standards.

# Intellex™ Feeders Comparison

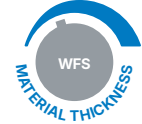


FEATURE	INTELLEX BASIC FEEDER	INTELLEX PRO FEEDER	INTELLEX ELITE FEEDER
Digital meters	■	■	Full color LCD
Remote voltage	■	■	■
Wire feed speed	■	■	■
Arc control	■	■	■
Trigger hold	■	■	■
Wire jog and purge	■	■	■
Wire feed speed feedback	■	■	■
Four drive rolls	■	■	■
Dual-wire models	■	■	■
Rotatable drive	■	■	■
Up to 60 lb. spool	■	■	■
MIG process	■	■	■
Insight Centerpoint™ Basic compatible*	■	■	■
EZ-Set MIG and Accu-Pulse®		■	■
Trigger select		■	■
Preflow and postflow		■	■
Memory slots		2	8
Out-of-box programs (steel/stainless/aluminum)		■	■
Out-of-box programs (nickel/copper nickel/silicon bronze/titanium)			■
EZ-Set Versa-Pulse™, high-deposition MIG and RMD®			■
XR™ Plus push-pull gun compatible			■
Profile Pulse™			■
Weld sequence control			■
Trigger dual schedule			■
Dual schedule switch support			■
Parameter limits			■
Memory lockouts			■
System lock			■
Wire retract			■
Auto thread and auto purge			■
Cloning and custom weld library			■
Remote gouge			■
Insight Centerpoint™ Premium compatible*			■

\*Insight module required.

## Processes

- MIG
- EZ-Set MIG (Intellex Pro and Intellex Elite)
- EZ-Set Accu-Pulse® (Intellex Pro and Intellex Elite)
- EZ-Set Versa-Pulse™ (Intellex Elite)
- EZ-Set High-deposition MIG (Intellex Elite)
- EZ-Set RMD® (Intellex Elite)



## Intellex Pro and Intellex Elite Feeder Programs

- Different wire sizes
- Different gas types
- Flux-cored
- Metal-cored
- Steel
- Stainless steel
- Aluminum

## Additional Intellex Elite Feeder Programs

- Nickel
- Copper nickel
- Silicon bronze
- Titanium

# Intellex™ Feeder Specifications (Subject to change without notice.)



INPUT POWER	WELDING POWER SOURCE	INPUT WELDING CIRCUIT RATING	WIRE FEED SPEED	WIRE DIAMETER CAPACITY	MAXIMUM SPOOL SIZE CAPACITY	DIMENSIONS (H x W x D)	NET WEIGHT
50 VDC	Deltaweld 350, 500 or 600	600 A at 113 VDC, 60% duty cycle	50–780 ipm (1.3–19.8 m/min.)	.023–5/64 in. (0.6–2.0 mm) Elite model only: Aluminum: .035–1/16 in. (0.9–1.6 mm)	18 in. (457 mm) 60 lb. (27 kg)	Single-wire: 16.25 x 12.38 x 27.88 in. (413 x 314 x 708 mm) Dual-wire: 14 x 18 x 34.5 in. (356 x 457 x 876 mm)	Single-wire: 44.8 lb. (20.3 kg) Dual-wire: 77 lb. (34.9 kg)

Certified by Canadian Standards Association to both the Canadian and U.S. Standards.



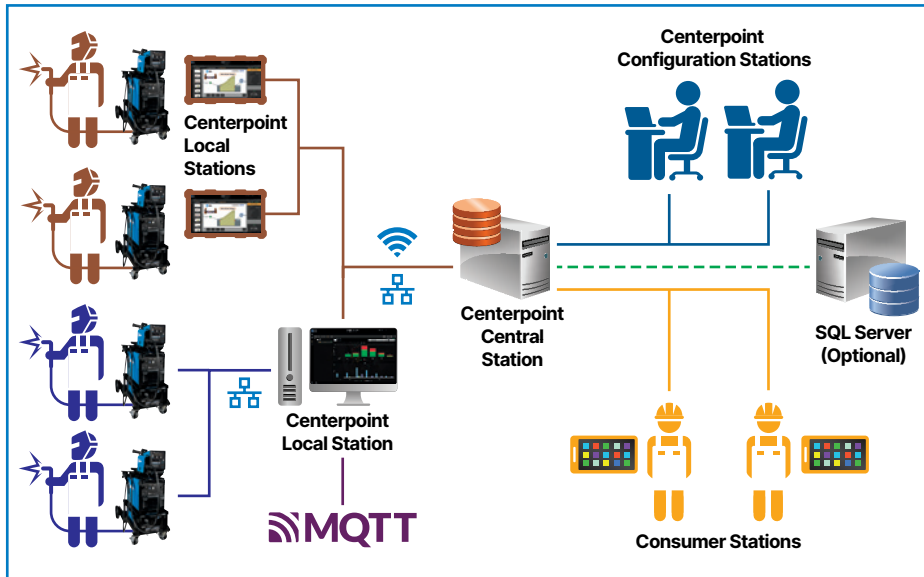
# Insight Welding Intelligence™

With an Insight weld monitoring system you can get more done, produce higher-quality welds and control costs.

## **Insight Centerpoint™** (Purchased license(s) of Centerpoint required.)

On-premises application providing productivity/utilization metrics, capture of welding parameters, operator weld sequence governance, and integration with enterprise IIoT solutions. Scalable to end user needs.

- **Measure welding productivity.** See each welder's arc-on time to set baselines and plan improvements. Capture activities to understand downtime reasons.
- **Govern operator tasks.** Through an easy-to-use operator interface direct welding and non-welding tasks to follow standard work practices, reduce out of sequence welds, and prevent missing welds.
- **Reduce training costs.** Utilize Centerpoint as the "Digital Mentor" to train new welders on proper production steps freeing up senior personnel for more productive activities.
- **Configure weld process remotely.** Full fleet management allows configuration of Deltaweld settings from Centerpoint.



### Requirements

Deltaweld® 350 and 500 require Insight factory option (page 12) or field install kit (289303)

Deltaweld 600 includes required Insight board option

### Modes of operation

- **Basic mode** included at no cost
- **Premium mode** requires a purchased capability key for each Deltaweld

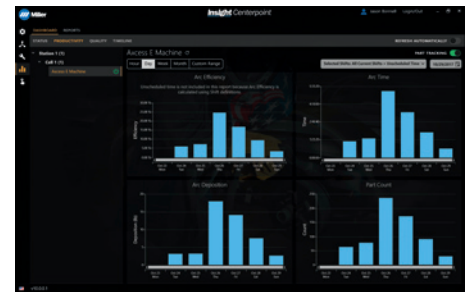
**301485** Centerpoint v10 Single License

**301490** Centerpoint Premium Capability Activation



▲ Premium mode

▼ Basic mode



Learn more at [MillerWelds.com/insight](http://MillerWelds.com/insight)

# Deltaweld® 500 MIGRunner™ Packages

## Deltaweld 500 MIGRunner with Intellex™ Basic Feeder

**951000147** With single-wire Intellex Basic

**951000148** With dual-wire Intellex Basic

### Includes

- Deltaweld power source (907785) with factory-installed industrial cart with stowaway dual cylinder rack
- Intellex Basic single- **OR** dual-wire feeder
- 15 ft. (4.6 m) Bernard® BTB Gun 400 A (two with dual-wire feeder) with AccuLock™ consumables
- Factory-installed swivel kit with integrated handle, cable and gun holders, and chains for gas cylinders
- Cart accessory kit for single- or dual-wire feeders consisting of flowmeter regulator with 5 ft. (1.5 m) gas hose (two with dual-wire feeder), 10 ft. (3 m) 4/0 feeder weld cable with lugs, 15 ft. (4.6 m) work cable with 600-amp C-clamp, and 9 ft. (2.7 m) ArcConnect control/motor cable
- .035/.045 in. V-groove drive rolls
- Quick-setup guide



951000147 package shown

## Deltaweld 500 MIGRunner with Intellex™ Pro Feeder

**208/230/460 V**

**951000149** With single-wire Intellex Pro

**951000150\*** With Insight and single-wire Intellex Pro

**951000151** With dual-wire Intellex Pro

**575 V**

**951000155** With single-wire Intellex Pro

**951000156\*** With Insight and single-wire Intellex Pro

### Includes

- Deltaweld power source (208/230/460 V: 907785, or 907785002 on Insight package) **OR** (575 V: 907786, or 907786002 on Insight package) with factory-installed industrial cart with stowaway dual cylinder rack
- Intellex Basic single- **OR** dual-wire feeder
- 15 ft. (4.6 m) Bernard® BTB Gun 400 A (two with dual-wire feeder) with AccuLock™ consumables
- Factory-installed swivel kit with integrated handle, cable and gun holders, and chains for gas cylinders
- Cart accessory kit for single- or dual-wire feeders consisting of flowmeter regulator with 5 ft. (1.5 m) gas hose (two with dual-wire feeder), 10 ft. (3 m) 4/0 feeder weld cable with lugs, 15 ft. (4.6 m) work cable with 600-amp C-clamp, and 9 ft. (2.7 m) ArcConnect control/motor cable
- .035/.045 in. V-groove drive rolls
- Quick-setup guide

\*Includes Insight Centerpoint™ Basic mode. Insight Centerpoint Basic mode requires Centerpoint license(s).



951000150 package shown

## Deltaweld 500 MIGRunner with Intellex™ Elite Feeder

**208/230/460 V**

**951000152** With single-wire Intellex Elite

**951000153\*\*** With Insight and single-wire Intellex Elite

**951000154** With dual-wire Intellex Elite

**575 V**

**951000157** With single-wire Intellex Elite

**951000158\*\*** With Insight and single-wire Intellex Elite

**951000159** With dual-wire Intellex Elite

### Includes

- Deltaweld power source (208/230/460 V: 907785, or 907785002 on Insight package) **OR** (575 V: 907786, or 907786002 on Insight package) with factory-installed industrial cart with stowaway dual cylinder rack
- Intellex Basic single- **OR** dual-wire feeder
- 15 ft. (4.6 m) Bernard® BTB Gun 400 A (two with dual-wire feeder) with AccuLock™ consumables
- Factory-installed swivel kit with integrated handle, cable and gun holders, and chains for gas cylinders
- Cart accessory kit for single- or dual-wire feeders consisting of flowmeter regulator with 5 ft. (1.5 m) gas hose (two with dual-wire feeder), 10 ft. (3 m) 4/0 feeder weld cable with lugs, 15 ft. (4.6 m) work cable with 600-amp C-clamp, and 9 ft. (2.7 m) ArcConnect control/motor cable
- .035/.045 in. V-groove drive rolls
- Quick-setup guide

\*\*Includes Insight Centerpoint™ Basic mode. Insight Centerpoint Basic mode requires Centerpoint license(s). Optional Insight Centerpoint Premium (301490) can be added for use with Intellex Elite feeder/ROI.



951000153 package shown

# Genuine Miller® Accessories

## Industrial Cart and Feeder Swivel Kit

Feeder Swivel Kit (301838) is required to add handle, MIG gun holder, cable management, and gas cylinder support.



**Industrial Cart 301758**  
Robust cart features small footprint, stowaway dual-cylinder rack and lockable front casters with oversized rear wheels. Industrial cooler (sold separately) integrates into bottom portion of cart.



**Feeder Swivel Kit 301838**  
For single- and dual-wire feeders. Allows feeder to mount to the top of Deltaweld. Includes integrated handle, MIG gun and cable holders.

*Note: ONLY the single-wire feeder can swivel.*



**Stationary Handle Kit 301529**  
Allows easy movement and portability of the power source.

*Note: Stationary handle kit is not compatible with feeder swivel kit above.*



**Hanging Bail 058435**  
Used for suspending feeder over work area.



**Cart Accessory Kit 301528**  
Single-wire feeder kit for use with industrial cart 301758. See note below for dual-wire feeder kit. Consists of flowmeter regulator with 5-foot (1.5 m) gas hose, 10-foot (3 m) 4/0 feeder weld cable with lugs, 15-foot (4.6 m) work cable with 600-amp C-clamp, and 9-foot (2.7 m) ArcConnect control/motor cable. Dual kit comes with an additional flowmeter regulator and gas hose.

*Note: For dual-wire feeder kit both 301528 and 301579 are required.*



**Spool Covers 295231**  
For single-wire feeders and left side of dual-wire feeders  
**090389**  
For right side of dual-wire feeders

For 12-inch (305 mm) spool.

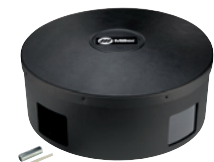
*Note: Spool covers cannot be installed if the wire drive assembly is in a rotated position.*



**Spool Adapter 047141**  
For use with 14-pound (6.4 kg) spool of Lincoln self-shielding wire.



**Wire Reel Assembly 108008**  
For 60-pound (27 kg) coil of wire.



**Reel Covers 195412** For single-wire feeders and left side of dual-wire feeders  
**091668** For right side of dual-wire feeders  
For 60-pound (27 kg) coil. Helps to protect the welding wire from dust and other contaminants.

*Note: Reel covers cannot be installed if the wire drive assembly is in a rotated position.*



**ArcConnect Control/Motor Cables**

**280471009** 9 ft. (2.7 m)  
**280471015** 15 ft. (4.6 m)  
**280471025** 25 ft. (7.6 m)  
**280471050** 50 ft. (15.2 m)  
**280471075** 75 ft. (22.9 m)  
**280471100** 100 ft. (30.5 m)  
**280471150** 150 ft. (45.7 m)

Connects power source directly to feeder or remote operator interface.

*Note: Cables cannot be joined together to create longer lengths and extension cables are not available.*



**Work Sense Leads (voltage sense)**

**300461** 25 ft. (7.6 m)  
**300462** 50 ft. (15.2 m)

When connected from the back of the wire feeder to the workpiece, the work sense lead provides accurate voltage feedback on the wire feeder display, and compensates for any voltage drop from the weld cables.



**AccuLock™ Nozzle N-A3412C**

*ONLY for use with Intellix™ Elite feeders.* Required for high-deposition MIG (HD MIG) process when using Bernard® BTB gun with AccuLock consumables.

## Coolant Systems



**Industrial Water Cooler (115 V) 301759**  
2.5-gallon cooler for use with water-cooled torches rated up to 600 amps. Plugs directly into the 115-volt receptacle on the back of the Deltaweld power source and slides into bottom of new cart. Features easy front fill, external filter, and power and flow indicators.

**Coolant Fitting 081543**  
5/8-18 UNF-2B LH THRD (sold separately).

**Coolant 043809**  
Sold in cases of four one-gallon recyclable plastic bottles. Miller coolants contain a base of ethylene glycol and deionized water to protect against freezing to -37 degrees Fahrenheit (-38°C) or boiling to 227 degrees Fahrenheit (108°C). Also contains a compound that resists algae growth.

# XR™ Plus Push-Pull Guns (ONLY for use with Intelx™ Elite feeder/ROI/Swingarc™.)



## XR-Aluma-Pro™ Plus Guns

**Air-Cooled**  
**301575** 15 ft. (4.6 m)  
**301574** 25 ft. (7.6 m)  
**301739** 35 ft. (10.7 m)

**Water-Cooled**  
**301576** 15 ft. (4.6 m)  
**301577** 25 ft. (7.6 m)  
**301740** 35 ft. (10.7 m)

## XR™-Pistol Plus Guns

**Air-Cooled**  
**300753** 15 ft. (4.6 m)  
**300754** 25 ft. (7.6 m)

**Water-Cooled**  
**300757** 25 ft. (7.6 m)

Available in air- or water-cooled versions in multiple lengths for extended reach with trouble-free, reliable feeding.

**Aluminum-series-specific tension setting** ensures smooth wire feeding performance with 4000 or 5000 series aluminum wires.

**Replaceable feed cable liner** is designed to provide consistent arc performance. It also reduces parts cost and service time by allowing a simple means of removing and replacing liner and not the complete feed cable.

**Isolated common knurled drive roll** helps reduce wear, reducing down time and cost.

**Easy-to-rotate self-seating head tube** allows for better access into tight spots, providing excellent current transfer.

**Serviceability.** These guns feature a full-length hook-and-loop seamed leather jacket with integrated strain reliefs for easy cable maintenance and protection. Additionally, the Aluma-Pro Plus guns feature quick connections between the control cable and electrical components (trigger, motor, potentiometer).

## Specifications (Subject to change without notice.)

MODEL	WELDING CURRENT RATING	WIRE FEED SPEED	WIRE TYPE AND DIAMETER CAPACITY	DIMENSIONS	NET WEIGHT (GUN ONLY)
XR-Aluma-Pro Plus (Air-cooled)	300 A at 100% duty cycle	70–900 ipm (1.8–23 m/min.) dependent on feeder used	.030–1/16 in. (0.8–1.6 mm) aluminum wire	H: 5 in. (127 mm) W: 2.5 in. (64 mm) D: 17 in. (432 mm)	2.5 lb. (1.1 kg)
XR-Aluma-Pro Plus (Water-cooled)	400 A at 100% duty cycle	70–900 ipm (1.8–23 m/min.)	Requires gun wire kit <b>230708</b> to run 1/16 in. (1.6 mm) wire		2.9 lb. (1.3 kg)
XR-Pistol Plus (Air-cooled)	200 A at 100% duty cycle 250 A at 60% duty cycle	70–900 ipm (1.8–23 m/min.)	.030–1/16 in. (0.8–1.6 mm) aluminum wire	H: 7.375 in. (187 mm) W: 1.875 in. (48 mm) D: 10.625 in. (270 mm)	2.2 lb. (1 kg)
XR-Pistol Plus (Water-cooled)	400 A at 100% duty cycle		Requires gun wire kit <b>230708</b> to run 1/16 in. (1.6 mm) wire		2.4 lb. (1.1 kg)

Note: XR Plus guns are only compatible with MPa Plus feeder, Intelx Elite feeder, Intelx Elite ROI/remot wire drive or Intelx Elite Swingarc boom-mounted feeder.

Certified by Canadian Standards Association to both the Canadian and U.S. Standards. Conforms to European standards.

## Drive Roll Kits and Guides

Select drive roll kits from chart below according to type and wire size being used.

Drive roll kits include four drive rolls, necessary guides and feature an anti-wear sleeve for inlet guide.

WIRE SIZE	V-GROOVE FOR HARD WIRE	U-GROOVE FOR SOFT WIRE OR SOFT-SHELLED CORED WIRES	V-KNURLED FOR HARD-SHELLED CORED WIRES	U-COGGED FOR EXTREMELY SOFT WIRE OR SOFT-SHELLED CORED WIRES, (I.E., HARD FACING TYPES)
.023/.025 in. (0.6 mm)	<b>087132</b>	—	—	—
.030 in. (0.8 mm)	<b>046780</b>	—	—	—
.035 in. (0.9 mm)	<b>046781</b>	<b>044750</b>	<b>046792</b>	—
.040 in. (1.0 mm)	<b>191917</b>	—	—	—
.045 in. (1.1/1.2 mm)	<b>046782</b>	<b>046785</b>	<b>046793</b>	<b>083319</b>
.052 in. (1.3/1.4 mm)	<b>046783</b>	<b>046786</b>	<b>046794</b>	—
1/16 in. (1.6 mm)	<b>046784</b>	<b>046787</b>	<b>046795</b>	<b>046800</b>
.068/.072 in. (1.8 mm)	—	—	—	—
5/64 in. (2.0 mm)	—	<b>046788</b>	<b>046796</b>	<b>046801</b>

\*Included with Intelx feeder packages. Drive roll is dual-size reversible with one .035-inch and one .045-inch groove.

\*\*Included with push-pull gun packages. Drive roll is dual-size reversible with one .035-inch and one .045-inch groove which also accommodates .047-inch (3/64-inch) wire.

## Wire Guides

WIRE SIZE	INLET GUIDE	INTERMEDIATE GUIDE
.023–.040 in. (0.6–1.0 mm)	<b>221030</b>	<b>056206</b>
.045–.052 in. (1.2–1.3 mm)	<b>221030</b>	<b>056207</b>
1/16–5/64 in. (1.6–2.0 mm)	<b>221030</b>	<b>056209</b>
5/64–1/8 in. (2.0–3.2 mm)	<b>229919</b>	<b>056211</b>

Note: When ordering hard wire kits, retain factory-supplied inlet guide.

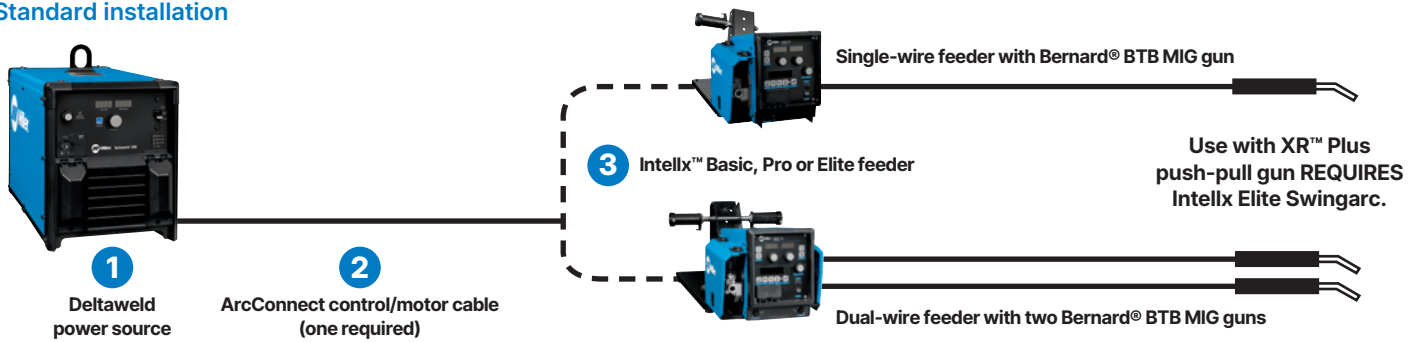
## Nylon Guides for Feeding Aluminum

WIRE SIZE	INLET GUIDE AND INTERMEDIATE GUIDE KITS
.035 in. (0.9 mm)	<b>293928</b>
.047 in. (1.2 mm)	<b>293929</b>
1/16 in. (1.6 mm)	<b>293930</b>

Note: U-groove drive rolls are recommended when feeding aluminum wire.

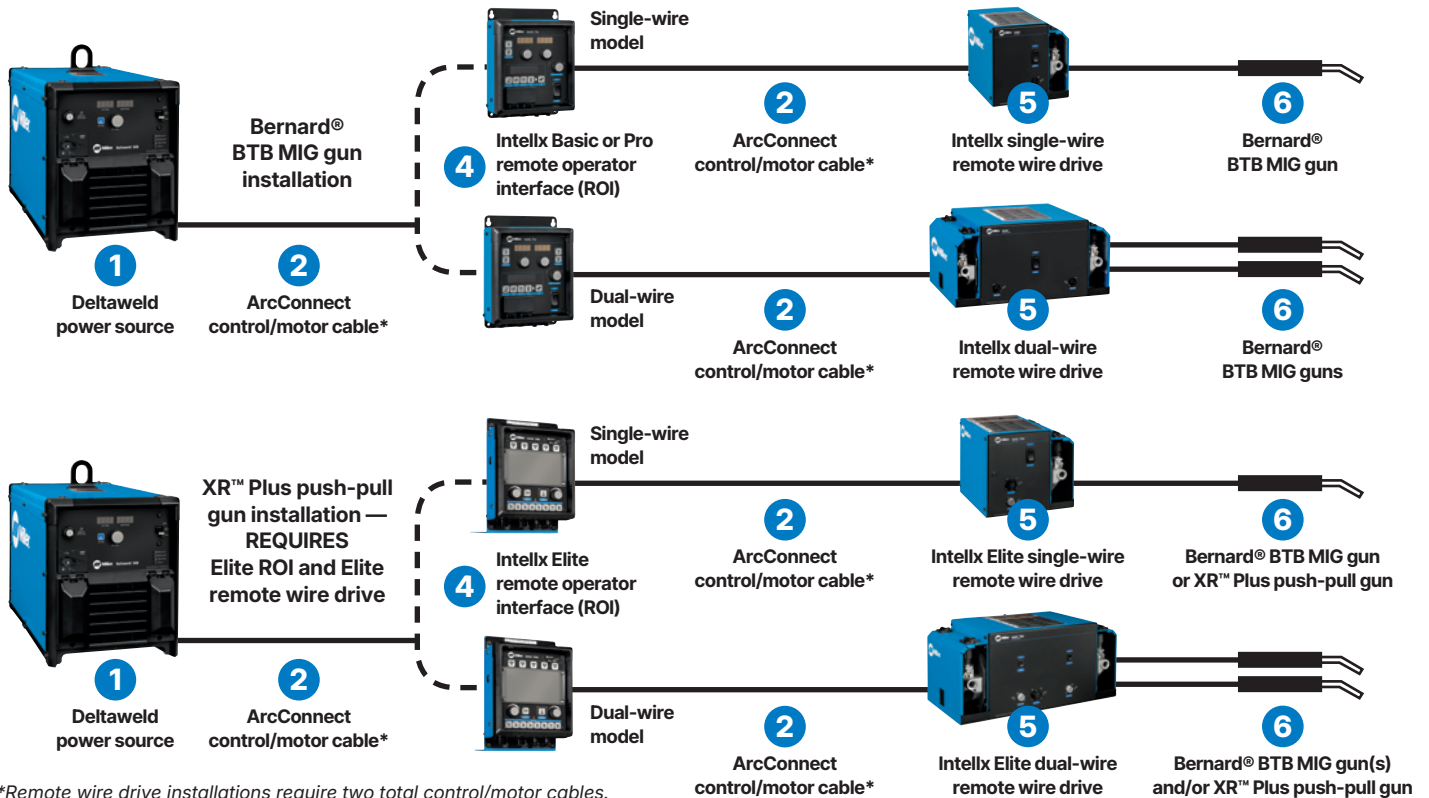
# Typical Deltaweld® 500/600 System Installations

## Standard installation



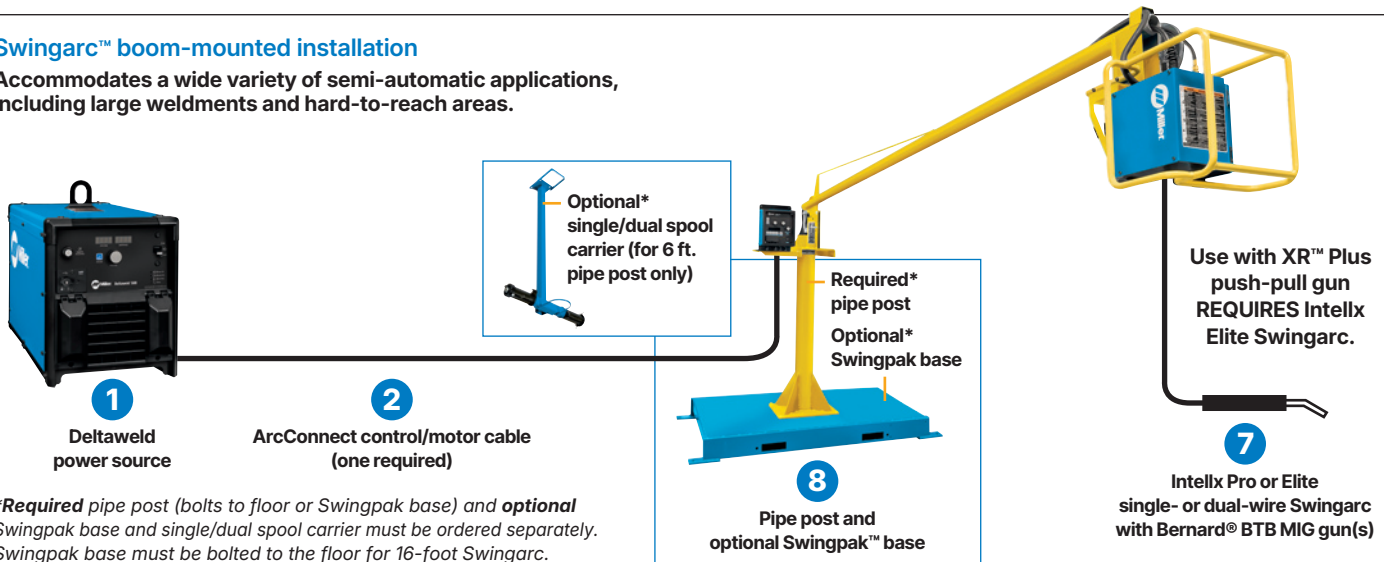
## Remote wire drive installations

Ideal for fixed automation and boom applications where the wire drive motor is installed/controlled remotely.



## Swingarc™ boom-mounted installation

Accommodates a wide variety of semi-automatic applications, including large weldments and hard-to-reach areas.



\*Required pipe post (bolts to floor or Swingpak base) and optional Swingpak base and single/dual spool carrier must be ordered separately. Swingpak base must be bolted to the floor for 16-foot Swingarc. See page 11.

# Ordering Information (Most popular models ◀)

Configure a Custom Deltaweld System (See corresponding item numbers in Typical Deltaweld Systems Installations on page 10.)  
See page 12 for packages.

EQUIPMENT AND OPTIONS	STOCK NO.	DESCRIPTION	QTY.	PRICE
<b>1 Power Source</b>				
<b>Deltaweld™ 500</b> 208/230/460 V	<b>907785</b> ◀	With ArcConnect and meters		
	<b>907785001</b>	With ArcConnect, meters and 14-pin receptacle		
	<b>907785002*</b>	With ArcConnect, meters and Insight		
	<b>907785003*</b>	With ArcConnect, meters, 14-pin receptacle and Insight		
<b>Deltaweld™ 600</b> 208/230/460 V	<b>907941003*</b>	With ArcConnect, meters, 14-pin receptacle and Insight		
<b>Deltaweld™ 500</b> 575 V	<b>907786</b>	With ArcConnect and meters		
	<b>907786001</b>	With ArcConnect, meters and 14-pin receptacle		
	<b>907786002*</b>	With ArcConnect, meters and Insight		
	<b>907786003*</b>	With ArcConnect, meters, 14-pin receptacle and Insight		
<b>Deltaweld™ 600</b> 575 V	<b>907942003*</b>	With ArcConnect, meters, 14-pin receptacle and Insight		
<b>2 Cables and Leads</b>				
ArcConnect Control/Motor Cables		See page 8 for available lengths		
Work Sense Leads (volt sense)		See page 8 for available lengths		
<b>3 Feeder, ROI and Swingarc</b>				
<b>Intelx™ Basic Bench-Style Wire Feeders</b>	<b>951783001</b>	Single-wire feeder with Bernard BTB Gun 400 A	With AccuLock™ consumables and .035/.045 in. V-groove drive rolls	
	<b>951815001</b>	Dual-wire feeder with two Bernard BTB Gun 400 A		
<b>Intelx™ Pro Bench-Style Wire Feeders</b>	<b>951784001</b> ◀	Single-wire feeder with Bernard BTB Gun 400 A		
	<b>951816001</b>	Dual-wire feeder with two Bernard BTB Gun 400 A		
<b>Intelx Elite Bench-Style Wire Feeders</b>	<b>951941001</b>	Single-wire feeder with Bernard BTB Gun 400 A		
	<b>951942001</b>	Dual-wire feeder with two Bernard BTB Gun 400 A		
<b>4 Intelx Basic Remote Operator Interface (ROI)</b>	<b>301548</b>	Control box for single-wire drive assembly		
	<b>301551</b>	Control box for dual-wire drive assembly		
<b>Intelx Pro Remote Operator Interface (ROI)</b>	<b>301552</b>	Control box for single-wire drive assembly		
	<b>301553</b>	Control box for dual-wire drive assembly		
<b>Intelx Elite Remote Operator Interface (ROI)</b>	<b>301606</b>	Control box for single-wire drive assembly. <b>ONLY</b> for use with Intelx Elite remote wire drive		
	<b>301607</b>	Control box for dual-wire drive assembly. <b>ONLY</b> for use with Intelx Elite remote wire drive		
<b>5 Intelx Remote Wire Drives</b>	<b>301554</b>	Single-wire drive assembly		
	<b>301555</b>	Dual-wire drive assembly		
<b>Intelx Elite Remote Wire Drives</b>	<b>301722</b>	Single-wire drive assembly. <b>ONLY</b> for use with Intelx Elite ROI		
	<b>301723</b>	Dual-wire drive assembly. <b>ONLY</b> for use with Intelx Elite ROI		
<b>6 Bernard® BTB Gun 400 A</b>	<b>Q4015AE9EMC</b>	400 A, 15 ft. (4.6 m) with AccuLock™ consumables		
		<b>ONLY</b> for use with Intelx Elite wire feeder, Elite ROI/remote wire drive or Elite Swingarc boom-mounted wire feeder. See page 9		
<b>7 Intelx Pro Swingarc™ Boom-Mounted Wire Feeders</b>	<b>951804001</b>	12 ft. single-wire model with Bernard BTB Gun 400 A	With AccuLock™ consumables and .035/.045 in. V-groove drive rolls	
	<b>951806001</b>	16 ft. single-wire model with Bernard BTB Gun 400 A		
<b>951932001</b>	12 ft. dual-wire model with two Bernard BTB Gun 400 A			
<b>Intelx Elite Swingarc™ Boom-Mounted Wire Feeders</b>	<b>951000091</b>	12 ft. single-wire model with Bernard BTB Gun 400 A		
	<b>951000093</b>	16 ft. single-wire model with Bernard BTB Gun 400 A		
	<b>951000092</b>	12 ft. dual-wire model with two Bernard BTB Gun 400 A		
<b>8 Pipe Post</b>	<b>149838</b>	4 ft. pipe post. Required for mounting Swingarc booms		
	<b>149839</b>	6 ft. pipe post. Required for mounting Swingarc booms		
	<b>Swingpak™ Base</b>	<b>183997</b>	Optional mounting platform for pipe post	
<b>Single/Dual Spool Carrier</b>	<b>300352</b>	Optional spool carrier for 6 ft. pipe post		
<b>Accessories</b>				
<b>Industrial Cart</b>	<b>301758</b>	For Deltaweld 350/500/600		
<b>Cart Accessory Kit</b>		For single- or dual-wire bench feeders. See page 8		
<b>Stationary Handle Kit</b>	<b>301529</b>			
<b>Feeder Accessories</b>		See page 8		
<b>Coolant Systems</b>				
<b>Industrial Water Cooler</b>	<b>301759</b>	See page 8		
<b>Coolant Fitting</b>	081543	5/8-18 UNF-2B LH thread		
<b>Coolant</b>	<b>043809</b>	See page 8		

DATE:

TOTAL QUOTED PRICE:

\*Includes Insight Centerpoint™ Basic mode. Insight Centerpoint Basic mode requires Centerpoint license(s).  
Optional Insight Centerpoint Premium (301490) can be added for use with Intelx Elite feeder/ROI.

# Ordering Information (Most popular models ◀)

DELTAWELD® 500 PACKAGES	STOCK NO.	DESCRIPTION	QTY.	PRICE
<b>Deltaweld 500 MIGRunner™ with Single-Wire Intellex™ Basic</b>	<b>951000147</b>	Includes Deltaweld 500 power source (907785), single- or dual-wire Intellex Basic feeder with Bernard® BTB Gun 400 A (two with dual-wire feeder) and AccuLock™ consumables. See page 7 for complete package description		
<b>Deltaweld 500 MIGRunner with Dual-Wire Intellex Basic</b>	<b>951000148</b>			
<b>Deltaweld 500 MIGRunner with Single-Wire Intellex Pro</b>	<b>951000149</b> ◀	Includes Deltaweld 500 power source (907785, or 907785002 on Insight package), single- or dual-wire Intellex Pro feeder with Bernard® BTB Gun 400 A (two with dual-wire feeder) and AccuLock™ consumables. See page 7 for complete package description		
<b>Deltaweld 500 MIGRunner with Insight and Single-Wire Intellex Pro</b>	<b>951000150*</b>			
<b>Deltaweld 500 MIGRunner with Dual-Wire Intellex Pro</b>	<b>951000151</b>			
<b>Deltaweld 500 MIGRunner with Single-Wire Intellex Elite</b>	<b>951000152</b>	Includes Deltaweld 500 power source (907785, or 907785002 on Insight package), single- or dual-wire Intellex Elite feeder with Bernard® BTB Gun 400 A (two with dual-wire feeder) and AccuLock™ consumables. See page 7 for complete package description		
<b>Deltaweld 500 MIGRunner with Insight and Single-Wire Intellex Elite</b>	<b>951000153**</b>			
<b>Deltaweld 500 MIGRunner with Dual-Wire Intellex Elite</b>	<b>951000154</b>			
<b>Deltaweld 500 with Insight, Running Gear, and Cart Accessory Kit</b>	<b>907898**</b>	Same as above, but without wire feeder and MIG gun (see options on page 11). If ordering a dual-wire feeder, also order accessory kit (301579)		
<b>Deltaweld 500 (575 V) MIGRunner with Single-Wire Intellex Pro</b>	<b>951000155</b> ◀	Includes Deltaweld 500 (575 V) power source (907786, or 907786002 on Insight package), single-wire Intellex Pro feeder with Bernard® BTB Gun 400 A and AccuLock™ consumables. See page 7 for complete package description		
<b>Deltaweld 500 (575 V) MIGRunner with Insight and Single-Wire Intellex Pro</b>	<b>951000156*</b>			
<b>Deltaweld 500 (575 V) MIGRunner with Single-Wire Intellex Elite</b>	<b>951000157</b>	Includes Deltaweld 500 (575 V) power source (907786, or 907786002 on Insight package), single- or dual-wire Intellex Elite feeder with Bernard® BTB Gun 400 A (two with dual-wire feeder) and AccuLock™ consumables. See page 7 for complete package description		
<b>Deltaweld 500 (575 V) MIGRunner with Insight and Single-Wire Intellex Elite</b>	<b>951000158**</b>			
<b>Deltaweld 500 (575 V) MIGRunner with Dual-Wire Intellex Elite</b>	<b>951000159</b>			
<b>Deltaweld 500 (575 V) with Insight Running Gear, and Cart Accessory Kit</b>	<b>907900**</b>	Same as above, but without wire feeder and MIG gun (see options on page 11). If ordering a dual-wire feeder, also order accessory kit (301579)		

DATE:

TOTAL QUOTED PRICE:

\*Includes Insight Centerpoint™ Basic mode. Insight Centerpoint Basic mode requires Centerpoint license(s).

\*\*Includes Insight Centerpoint™ Basic mode. Insight Centerpoint Basic mode requires Centerpoint license(s). Optional Insight Centerpoint Premium (301490) can be added for use with Intellex Elite feeder/ROI.

Distributed by:

