

Weldcraft™ A-150 Series

Formerly WP-17 Series

Hand-Held Air-Cooled
TIG Welding Torches 

Quick Specs

Models

A-150	A-150 Flex Redhead™
A-150 Valve	A-150 Flex Valve Redhead™
A-150 Flex	A-150 Positive Stop Handle
A-150 Flex Valve	A-150 Valve Positive Stop Handle

Applications

Fabrication
Maintenance and repair
Aerospace
Food and beverage industry
Metal art
Petro/chemical
Shipboard installation/repair

Rated Output

DC: 150 A, AC: 115 A

Duty Cycle 60%

Electrode Range

.020–1/8 in. (0.5–3.2 mm)

A-150 Series TIG torches

Formerly known as the WP-17 Series, the A-150 Series is comprised of an assortment of versatile and innovative air-cooled torches designed for maximum comfort in a variety of applications. The A-150 Series torches are a cost-effective alternative to complex water-cooled systems.

Diamond Grip™ head design (A-150 and A-150 Valve) has ergonomic contact points for thumb and fingers. Provides a more comfortable grip and reduces operator fatigue.

Improve control and comfort with the A-150 Flex and the flexible neck that allows access into hard-to-reach areas.

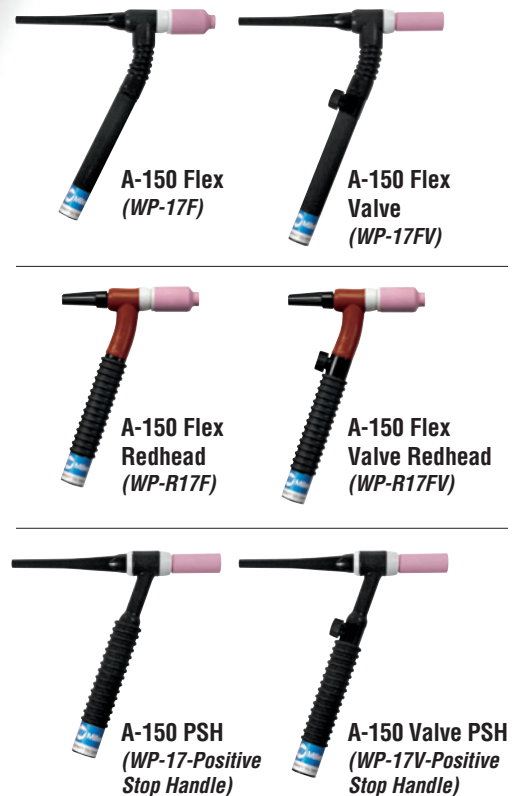
Maximum versatility. Utilize the Redhead Series torches in a variety of welding applications without adding expenses.

Ribbed handle and torch design provide cool operation and maximum operator comfort while reducing downtime caused by operator fatigue.

Utilize existing parts. Replacement parts are easy to find. The A-150 Series uses Weldcraft 10N series consumables.

Available with 12.5- or 25-foot, single- or heavy-duty two-piece cable assembly determined by the compatibility of the power source. Heavy-duty cable assembly allows use of a larger conductor for the power cable which simplifies repair and replacement making it ideal for field applications.

Additional torch models



Note: Torches delivered may vary slightly from images shown.



Miller Electric Mfg. Co.
An ITW Welding Company
1635 West Spencer Street
P.O. Box 1079
Appleton, WI 54912-1079 USA

Equipment Sales US and Canada
Phone: 866-931-9730
FAX: 800-637-2315
International Phone: 920-735-4554
International FAX: 920-735-4125

MillerWelds.com



Torch Packages

Models		1-Piece Power Cable Standard Rubber		1-Piece Power Cable Mono-Flex™		2-Piece Power Cable Rubber	
Old Model	New Name	12.5 ft. (3.8 m)	25 ft. (7.6 m)	12.5 ft. (3.8 m)	25 ft. (7.6 m)	12.5 ft. (3.8 m)	25 ft. (7.6 m)
WP-17	A-150	WP-17-12-R	WP-17-25-R	WP-17-12-MF	WP-17-25-MF	WP-17-12-2	WP-17-25-2
WP-17V	A-150 Valve	WP-17V-12-R	WP-17V-25-R	WP-17V-12-MF	WP-17V-25-MF	WP-17V-12-2	WP-17V-25-2
WP-17F	A-150 Flex	WP-17F-12-R	WP-17F-25-R	—	—	WP-17F-12-2	WP-17F-25-2
WP-17FV	A-150 Flex Valve	WP-17FV-12-R	WP-17FV-25-R	—	—	WP-17FV-12-2	WP-17FV-25-2
WP-R17FV	A-150 Flex Valve Redhead™	WP-R17FV-12-R	WP-R17FV-25-R	—	—	—	—
WP-17-PSH	A-150 PSH	—	WP-17-25-R-PSH	—	—	WP-17-12-2-PSH	WP-17-25-2-PSH
WP-17V-PSH	A-150 Valve PSH	WP-17V-12-R-PSH	WP-17V-25-R-PSH	—	—	—	WP-17V-25-2-PSH

V = Valve F = Flex FV = Flex Valve PSH = Positive Stop Handle (threaded handle)
 Torch packages include torch body, handle, power cable and long back cap.

Connectors

1-piece power cable connectors



194722
 50 mm Dinse-style
 gas thru for one-piece
 air-cooled torch.



195378
 50 mm Dinse-style
 for one-piece
 air-cooled torch.



105257
 Power cable adapter
 for one-piece
 air-cooled torch.



273483
 25 mm (small)
 Dinse-style gas
 thru one-piece
 air-cooled torch.

2-piece power cable connector

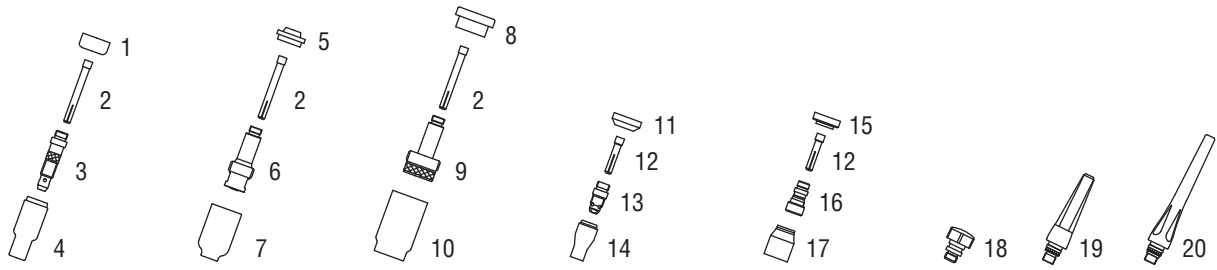


129527
 50 mm Dinse-style
 for two-piece cable
 air-cooled torch.

Machines	Connection Type	1-Piece Power Cable Connectors	2-Piece Power Cable Connectors
TIG Machines			
Syncrowave® 200/210	50 mm Dinse-style gas thru	194722	129527*
Syncrowave® 250 DX/350 DX (Dinse)	50 mm Dinse-style	195378	129527
Syncrowave® 250 DX/350 DX (stud)	1/2 in. stud	105257	N/A
Maxstar® 150 STL/STH	25 mm (small) Dinse-style gas thru	273483	127836*
Dynasty® 200/210/280/350, Maxstar® 200/210/280/350	50 mm Dinse-style	195378	129527
Multiprocess Machines			
Multimatic™ 200	25 mm (small) Dinse-style gas thru	273483	127836*
Dimension™ 302/452/NT 450/652	1/2 in. stud	105257	N/A
PipeWorx	1/2 in. stud	105257	N/A
XMT® 304/350	50 mm Dinse-style	195378	129527
XMT® 450	1/2 in. stud	105257	N/A
Engine-Driven Machines			
Most Big Blue®, Trailblazer®, Bobcat™, Blue Star® and Wildcat® models	1/2 in. stud	105257	N/A
Big Blue® 450 Duo CST	50 mm Dinse-style	195378	129527
General Reference			
	25 mm (small) Dinse-style gas thru	273483	N/A
	50 mm Dinse-style	195378	129527
	50 mm Dinse-style gas thru	194722	N/A
	1/2 in. stud	105257	N/A
Other Adapter			
	Stud to dinse-style adapter	232728	

*2-piece power cable connector is not gas thru.

Consumables (Refer to Owner's Manual for additional replacement parts.)



Non-Gas Lens

Electrode Size — inch (mm)	.020 (0.5)	.040 (1.0)	1/16 (1.6)	3/32 (2.4)	1/8 (3.2)			
1 Insulator (required)	18CG	18CG	18CG	18CG	18CG			
2 Collet	10N21	10N22	10N23	10N24	10N25			
3 Collet Body	10N29	10N30	10N31	10N32	10N28			
Nozzle Size — size # (inch)	4 (1/4)	5 (5/16)	6 (3/8)	7 (7/16)	8 (1/2)	10 (5/8)	12 (3/4)	Short
4 Alumina	10N50	10N49	10N48	10N47	10N46	10N45	10N44	—
* Long Alumina	—	10N49L	10N48L	10N47L	—	—	—	—
* Lava	105Z43	105Z42	105Z44	105Z45	08N78	08N79	08N80	—
* Long Lava	12N03	105Z60	12N02	105Z61	—	—	—	—

Gas Lens

Electrode Size — inch (mm)	.020 (0.5)	.040 (1.0)	1/16 (1.6)	3/32 (2.4)	1/8 (3.2)			
5 Insulator (required)	54N01	54N01	54N01	54N01	54N01			
2 Collet	10N21	10N22	10N23	10N24	10N25			
6 Gas Lens	45V29	45V24	45V25	45V26	45V27			
Nozzle Size — size # (inch)	4 (1/4)	5 (5/16)	6 (3/8)	7 (7/16)	8 (1/2)	10 (5/8)	12 (3/4)	Short
7 Alumina Gas Lens	54N18	54N17	54N16	54N15	54N14	—	—	54N19
* Long Gas Lens	—	54N17L	54N16L	54N15L	—	—	—	—

Large Diameter Gas Lens

Electrode Size — inch (mm)	.020 (0.5)	.040 (1.0)	1/16 (1.6)	3/32 (2.4)	1/8 (3.2)			
8 Insulator (required)	54N63	54N63	54N63	54N63	54N63			
2 Collet	10N21	10N22	10N23	10N24	10N25			
9 Large Diameter Gas Lens	45V0204	45V0204	45V116	45V64	995795			
Nozzle Size — size # (inch)	4 (1/4)	5 (5/16)	6 (3/8)	7 (7/16)	8 (1/2)	10 (5/8)	12 (3/4)	Short
10 Large Dia. Gas Lens	—	—	57N75	—	57N74	53N88	53N87	53N89
* Large Dia. Gas Lens-L	—	—	57N75L	—	57N74L	53N88L	53N87L	—
* Large Dia. Gas Lens-XL	—	—	57N75XL	—	57N74XL	53N88XL	53N87XL	—
* Large Dia. Gas Lens-XXL	—	—	57N75XXL	—	57N74XXL	53N88XXL	53N87XXL	—

Stubby Non-Gas Lens

Electrode Size — inch (mm)	.020 (0.5)	.040 (1.0)	1/16 (1.6)	3/32 (2.4)	1/8 (3.2)			
11 Insulator (required)	18CG20	18CG20	18CG20	18CG20	18CG20			
12 Stubby Collet	—	10N22S	10N23S	10N24S	10N25S			
13 Stubby Collet Body	17CB20	17CB20	17CB20	17CB20	17CB20			
Nozzle Size — size # (inch)	4 (1/4)	5 (5/16)	6 (3/8)	7 (7/16)	8 (1/2)	10 (5/8)	12 (3/4)	Short
14 Stubby Alumina	13N08	13N09	13N10	13N11	13N12	13N13	—	—

Stubby Gas Lens

Electrode Size — inch (mm)	.020 (0.5)	.040 (1.0)	1/16 (1.6)	3/32 (2.4)	1/8 (3.2)			
15 Insulator (required)	17GLG20	17GLG20	17GLG20	17GLG20	17GLG20			
12 Stubby Collet	—	10N22S	10N23S	10N24S	10N25S			
16 Stubby Gas Lens	—	17GL040	17GL116	17GL332	17GL18			
Nozzle Size — size # (inch)	4 (1/4)	5 (5/16)	6 (3/8)	7 (7/16)	8 (1/2)	10 (5/8)	12 (3/4)	Short
17 Alumina Gas Lens	53N58	53N59	53N60	53N61	53N61S	—	—	—

Back Caps

18 Short 57Y04	19 Medium 300M	20 Long 57Y02						
----------------	----------------	---------------	--	--	--	--	--	--

*Not shown.

Tungsten

Tungsten for the most demanding TIG welding applications!

Available in four types and industry-standard diameters, our line of Weldcraft™ tungsten electrodes has undergone rigorous testing to ensure the highest quality and durability. Color-coded packages include ten 7-inch (175 mm) tungsten electrodes.

Note: Refer to manufacturer SDS sheets for proper preparation and safety. Use proper ventilation/capture during preparation. Refer to manufacturer warning regarding ventilation.



Type	Diameter in. (mm)	Part #	Type	Diameter in. (mm)	Part #
2% Ceriated (EWCe-2)			Pure (EWP)		
Performs well in DC welding and arc starting at low-current settings, and offers excellent performance in AC processes.	0.040 (1.0)	WC040X7	Forms a clean, balled end when heated and provides good arc stability for AC welding with a balanced or unbalanced squarewave or sine wave.	0.040 (1.0)	—
	1/16 (1.6)	WC116X7		1/16 (1.6)	WP116X7
	3/32 (2.4)	WC332X7		3/32 (2.4)	WP332X7
	1/8 (3.2)	WC018X7		1/8 (3.2)	WP018X7
	5/32 (4.0)	WC532X7		5/32 (4.0)	—
2% Lanthanated (EWLa-2)			Rare Earth (EWG)		
Provides excellent arc starting, arc stability and re-ignition, and less tip erosion in AC or DC welding. Can substitute for 2% Thoriated.	0.040 (1.0)	WL2040X7	Combines the best of all alloying elements, and provides excellent arc stability in AC or DC welding.	0.040 (1.0)	—
	1/16 (1.6)	WL2116X7		1/16 (1.6)	WG116X7
	3/32 (2.4)	WL2332X7		3/32 (2.4)	WG332X7
	1/8 (3.2)	WL2018X7		1/8 (3.2)	WG018X7
	5/32 (4.0)	WL2532X7		5/32 (4.0)	—

Replacement Parts

Torch Bodies		
A-150	WP-17	
A-150 Valve	WP-17V	
A-150 Flex	WP-17F	
A-150 Flex Valve	WP-17FV	
A-150 Redhead™ Flex	WP-R17F	
A-150 Redhead™ Flex Valve	WP-R17FV	
A-150 PSH	WP-17-PSH	
A-150 Valve PSH	WP-17V-PSH	
Handles		
A-150 (ribbed)	H-100R	
A-150 Valve (knurled)	H-100	
A-150 Flex (ribbed)	105Z55R	
A-150 Flex Valve (knurled)	105Z55	
Valve Knob		
All valve models	VS-2	
Flex Head Only		
A-150 Flex/Flex Valve	17F	
A-150 Redhead™ Flex/Flex Valve	R17F	
Power Cables		
	12.5 ft. (3.8 m)	25 ft. (7.6 m)
1-Piece Rubber	57Y01R	57Y03R
Mono Flex™	57Y01MF	57Y03MF
2-Piece Rubber	57Y01-2	57Y03-2

Genuine Miller® Accessories



Accessory Kit AK2C
Includes one short back cap, one of each size (#4, #5, #6) alumina nozzle, and one of each size (.040, 1/16, 3/32 inch) of the following: collet, collet body, and 7-inch 2% ceriated tungsten electrode.



Accessory Kit AK-150MFC
Allows welding operators to customize their standard A-150 (WP-17) or A-125 (WP-9) TIG torch for their specific application. Kit converts into 28 different torch styles while using the A-150 and A-125 existing cable. Features collets, collet bodies, nozzles, torch heads, handle and more.

Extension Kit EK-2-25-R 25 ft. (7.6 m), rubber



Cable Covers
WC-3-10
10 ft. (3 m)
WC-3-22
22 ft. (6.7 m)
WC-3-48
48 ft. (14.6 m)



Wireless Remote Foot Control 300429
For remote current and contactor control. Receiver plugs directly into the 14-pin receptacle of Miller machine. 90-foot (27.4 m) operating range.



Wireless Remote Hand Control 300430
For remote current and contactor control. Receiver plugs directly into the 14-pin receptacle of Miller machine. 300-foot (91.4 m) operating range.



RCC-14 Remote Contactor and Current Control 151086
East/west rotary-motion fingertip control attaches to TIG torch using two hook-and-loop fasteners. Includes 26.5-foot (8 m) cord with 14-pin plug.



RCCS-14 Remote Contactor and Current Control 043688
North/south rotary-motion fingertip control attaches to TIG torch using two hook-and-loop fasteners. Includes 26.5-foot (8 m) cord with 14-pin plug.

Distributed by:

