

2X CLARITY

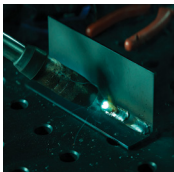
IS THE KEY TO
BETTER WELDING.

VALUE DIFFERENTIATORS

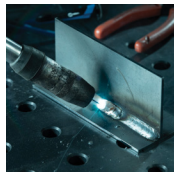
The choice is clear for 2x the clarity.

CLARITY

- **2x the clarity** with ClearLight™ 2.0 compared to welding helmets with 1/1/1/1 as per official USA ANSI certification of lens visibility
- **Increased contrast and clarity** that bring a more natural view while welders are helmet down



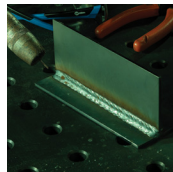
1/1/1/1 Technology
Dark State



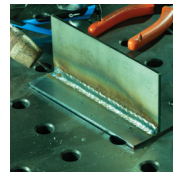
ClearLight™ 2.0
Lens Technology
Dark State

QUALITY

- With a brighter light state, welders can **better see their workpiece**, puddle and wire
- Allows more colors of the visible light spectrum for **accurate color**, less blue, green or yellow tints



1/1/1/1 Technology
Light State



ClearLight™ 2.0
Lens Technology
Light State

PRODUCTIVITY

- When welders can stay helmet down and see clearly before, during and after welds, they are saving time without constantly flipping up and down. Plus, there's less fatigue from 25% lighter lens.
- High-definition view to **see more detail** for better welds and **less rework**



HELMETS

To be clear ... **ClearLight™ 2.0** Lens Technology is available in all Digital and T94™ Series welding helmets*

*Classic Series helmets have 1st generation **ClearLight™** Lens Technology



Digital Infinity™
289714



Digital Elite™
289755



Digital Performance™
289842



T94™ XL
287768